

Omnissa Horizon Barcode Scanner Configuration Guide

Contents

Version Control	3
Overview.....	4
Tested Horizon Versions:	4
Device Supported Horizon Versions:.....	4
Getting Device VID and PID for Applying Registry Settings.....	5
Configuring Retsol PD-3000 using RMKS	7
First Level Validation:	7
Testing Steps:.....	7
Configuring RETSOL LS450 (USB Redirection):.....	8
First Level Validation:	8
Driver Installation:.....	9
Testing Steps:.....	9
Configuring Teemi T26N-AU (Serial Port Redirection):.....	10
Configuring Teemi T26N-AU (USB Redirection):.....	12
First Level Validation	12
Driver Installation:.....	12
Testing Steps:.....	13
Common Configuration Issue and Troubleshooting Steps.....	15
Tested Barcode Scanners:.....	16

Version Control

Version	Date	Updated By	Changes Summary
v1.0	25-01-2026	Anunta Team	Base version-Introduced legends; supported Horizon versions up to 8.17
v1.2	08-04-2026		Incorporated Next Client UI changes for Horizon 8.18; Modified steps for obtaining VID/PID values; Horizon version moved to 8.18

Overview

This document provides deeper insights on the setup and configuration for Barcode Scanners using USB, RMKS and Serial Port Redirection.

Legend:

S.No	LEGEND	DESCRIPTION
1	HZE	Horizon Enterprise
2	HZCoA	Horizon Cloud on Azure
3	HCS V1	Horizon Cloud Services V1
4	HCS V2	Horizon Cloud Services V2
5	HCS NextGen	Horizon Cloud Services NextGen

Tested Horizon Versions:

HZE	HZCoA	HCS V1	HCS V2	HCS NextGen
7.8 ~ 7.13	7.8 ~ 8.5	8.7	8.8 ~ 8.13	8.17
8.0 ~ 8.18				

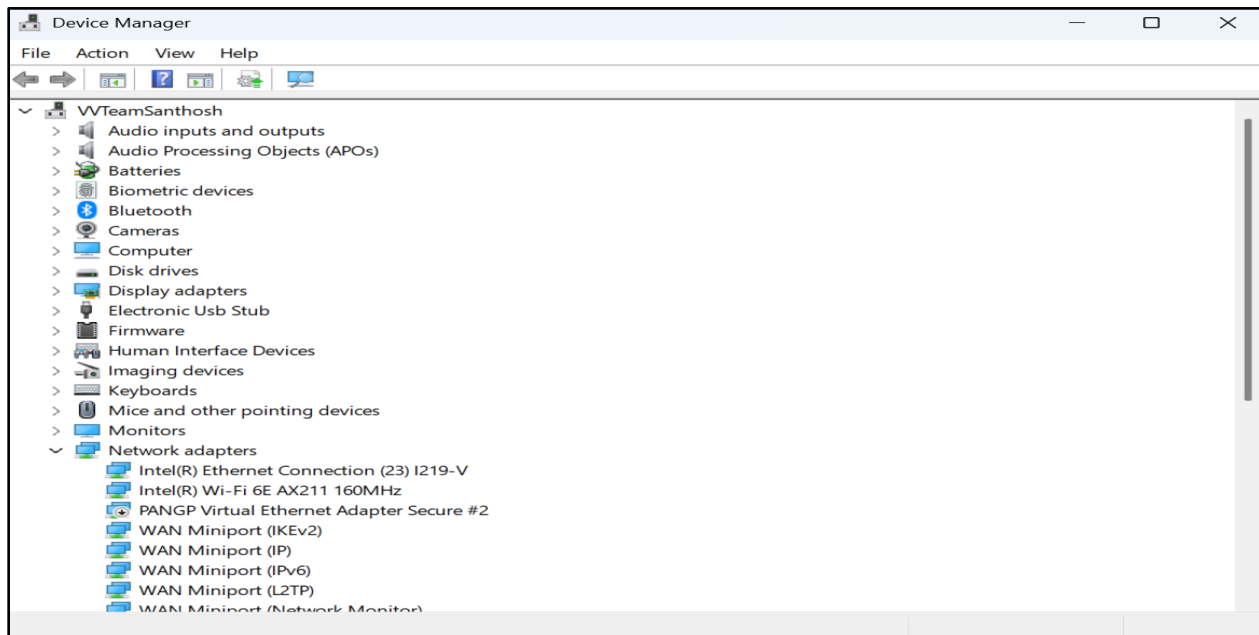
Device Supported Horizon Versions:

Device Name	Tested HZ Versions
Motorola DS4208	7.8 ~ 8.18
Datalogic GBT4500	7.8 ~ 8.18
Zebra-LS2208	8.4 ~ 8.18
RETSOL LS450	8.12 ~ 8.18
Zebra-DS4608	8.12 ~ 8.18
Honeywell Barcode Scanner 1950	8.4 ~ 8.18
Zebra-DS8108	8.12 ~ 8.18
Zebra-L14278	8.12 ~ 8.18
Honeywell Barcode Scanner1900G	8.12 ~ 8.18
Teemi T26N-AU	8.12 ~ 8.18
Retsol PD3000	8.17 ~ 8.18

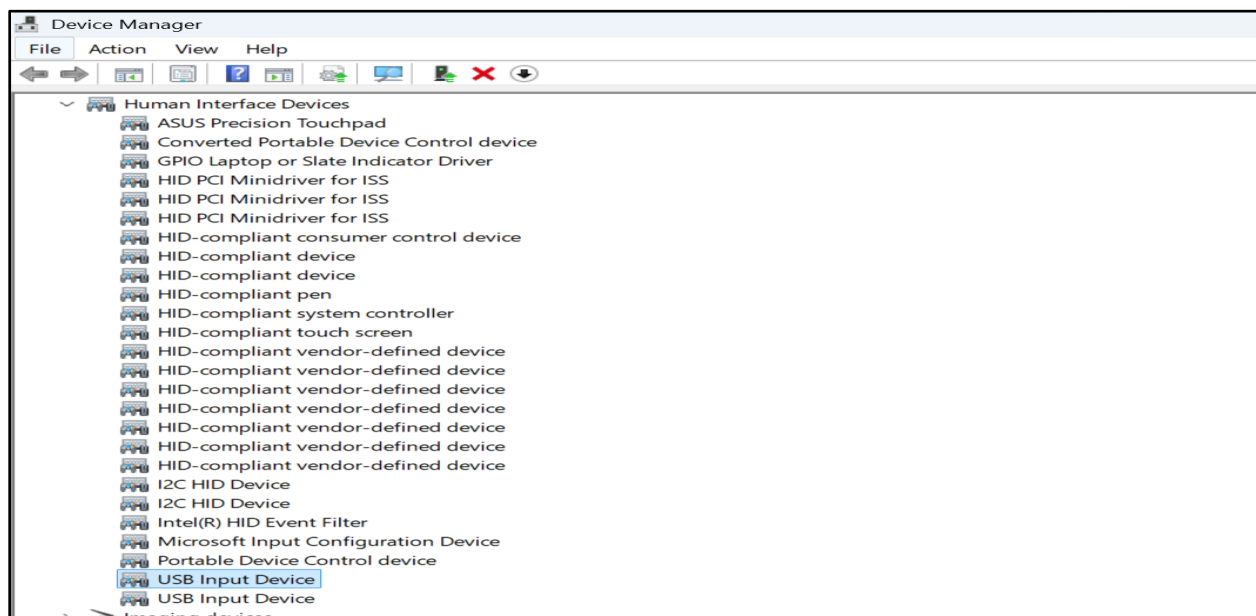
Getting Device VID and PID for Applying Registry Settings

Step 1: This value is required to apply the registry settings for few devices to make them work properly

Step 2: Open device manager and search for specific USB under appropriate expand list



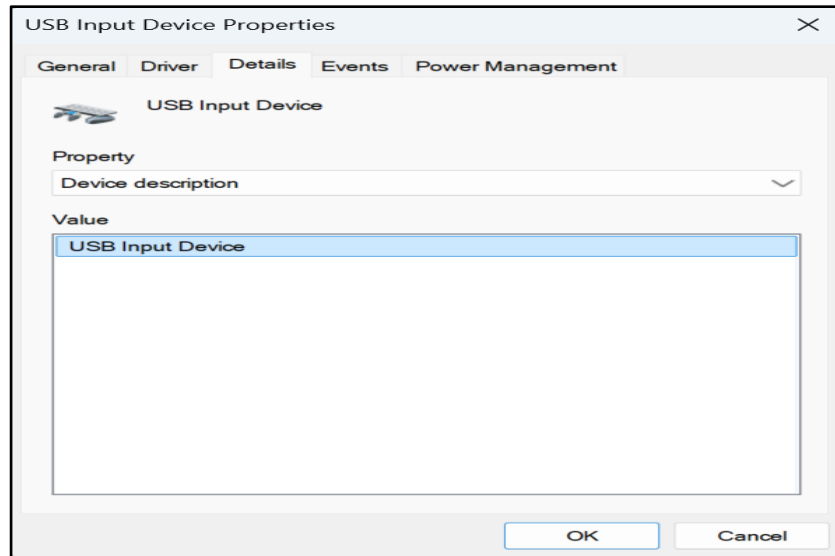
Step 3: Select USB under appropriate expand list



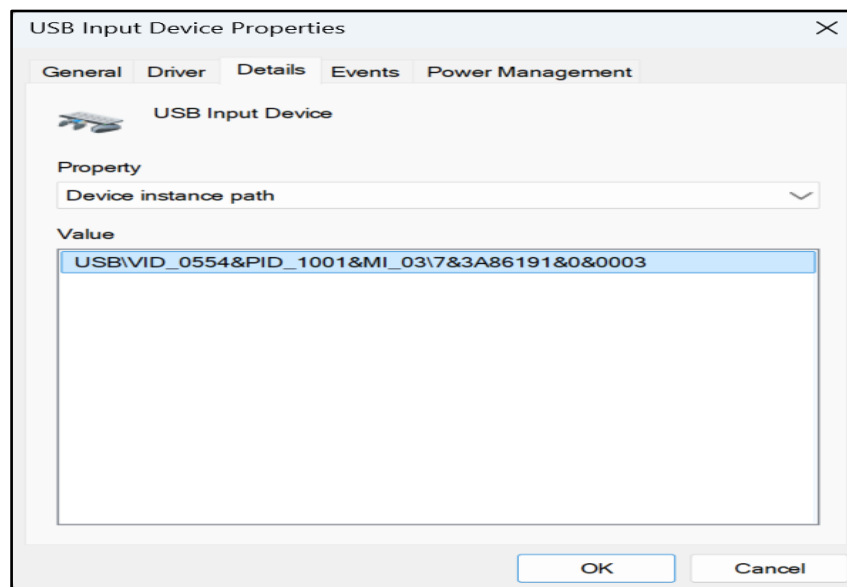
Omnissa LLC, 590 E Middlefield Road Mountain View CA 94043 www.omnissa.com

Copyright © 2026 Omnissa, LLC. All rights reserved. This product is protected by U.S. and international copyright and intellectual property laws. Omnissa products are covered by one or more patents listed at <https://www.omnissa.com>. Omnissa is a registered trademark or trademark of Omnissa, LLC in the United States and/or other jurisdictions. All other marks and names mentioned herein may be trademarks of their respective companies.

Step 4: Double click the detected USB and select Details from top menu grid.



Step 5: Select Device instance path in property and Vid Pid value is acquired.



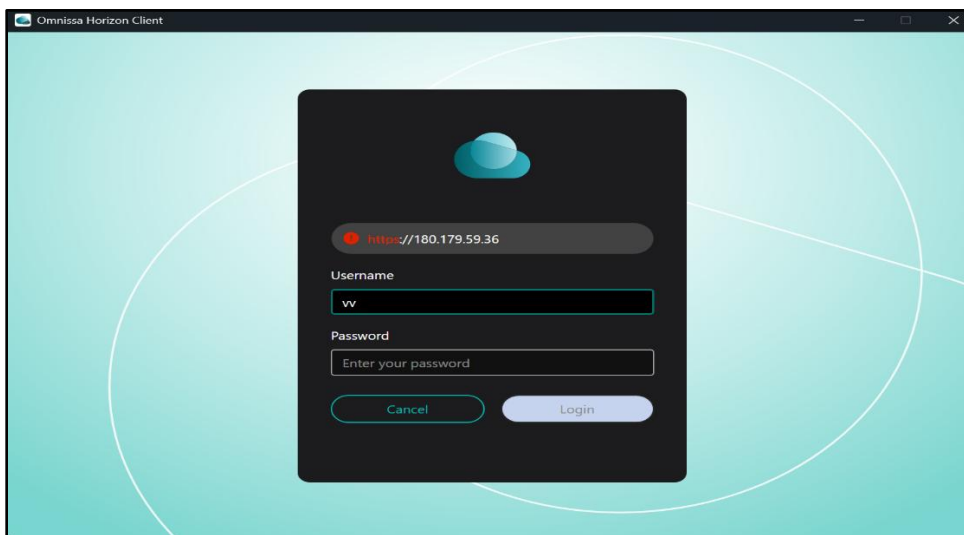
Configuring Retsol PD-3000 using RMKS

First Level Validation:

Step 0: Registry Settings not required, Testing Application – Notepad

Step 1: Connect the Retsol PD-3000 to the end point

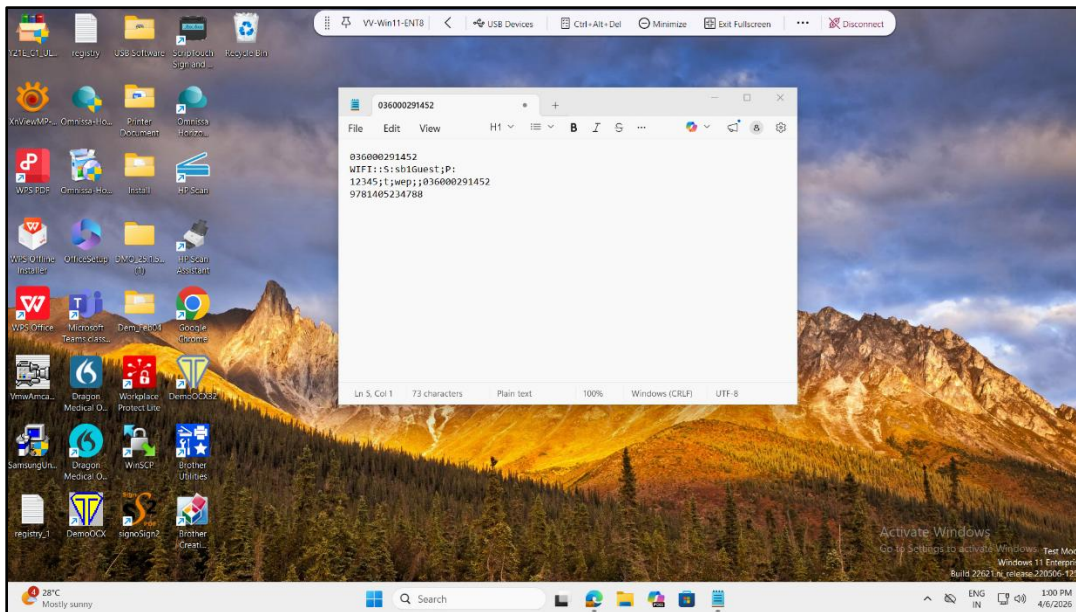
Step 2: Login Omnissa Horizon Client Next and open the preferred desktop session (VDI/RDSH)



Testing Steps:

Step 3: Open Notepad application

Step 4: Scan a bar code, the serial number will be appeared on Notepad application



Note:

1: Same steps to be followed for testing different model of DataLogic GBT4500, Zebra L14278, MotorolaDS4208

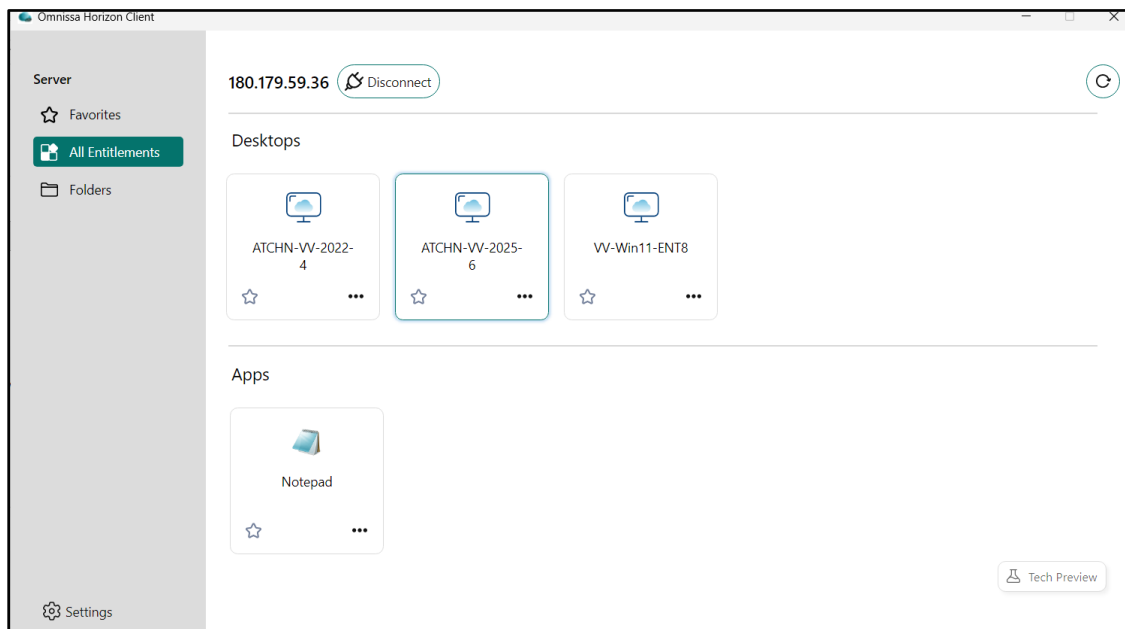
Configuring RETSOL LS450 (USB Redirection):

First Level Validation:

Step 0: Registry Settings not required, Testing Application – Notepad

Step 1: Connect the RETSOL LS450 to the Endpoint

Step 2: Login Ommissa Horizon Client and open the preferred desktop session (VDI/RDSH)



Step 3: Make sure RETSOL LS450 barcode scanner is redirected to the USB redirection Menu

Driver Installation:

Step 4: Install the “Data snip” application in the VDI/RDSH desktop.

Testing Steps:

Step 5: Redirect the RETSOL LS450 barcode Scanner device under USB redirection Menu

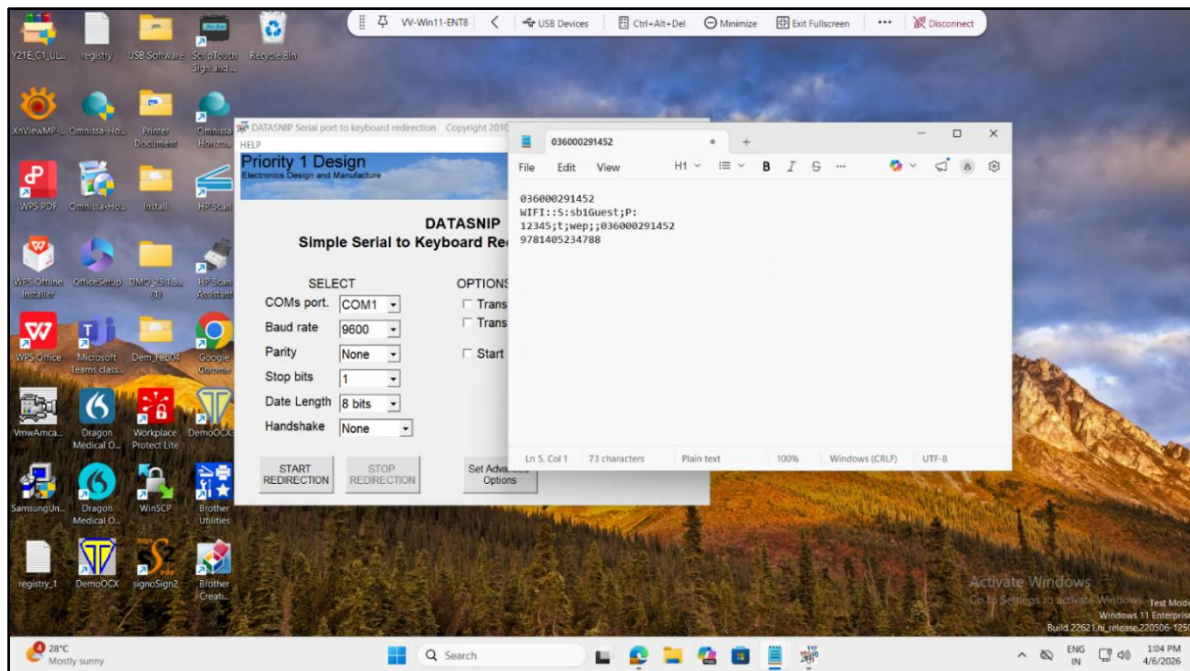
Step 6: Go to Device Manager and check the COM port value

Step 7: Open “Data snip” application

Step 8: Select the COMs Port value (i.e., The value shown in the Device Manager) and click Start Redirection button

Step 9: Open Notepad application

Step 10: Scan a bar code, the serial number will be appeared on Notepad application

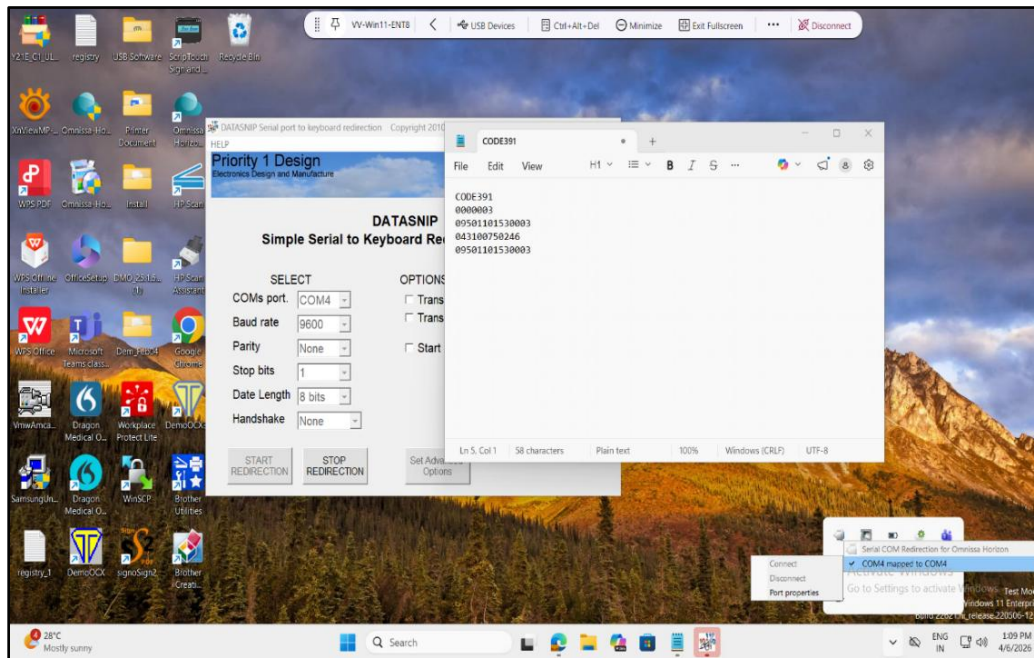


Configuring Teemi T26N-AU (Serial Port Redirection):

Step 11: This model works as both USB+ Serial Port

Step 12: Redirect the barcode Scanner device under serial port redirection menu

Step 13: Go to Device Manager and check the COM port value

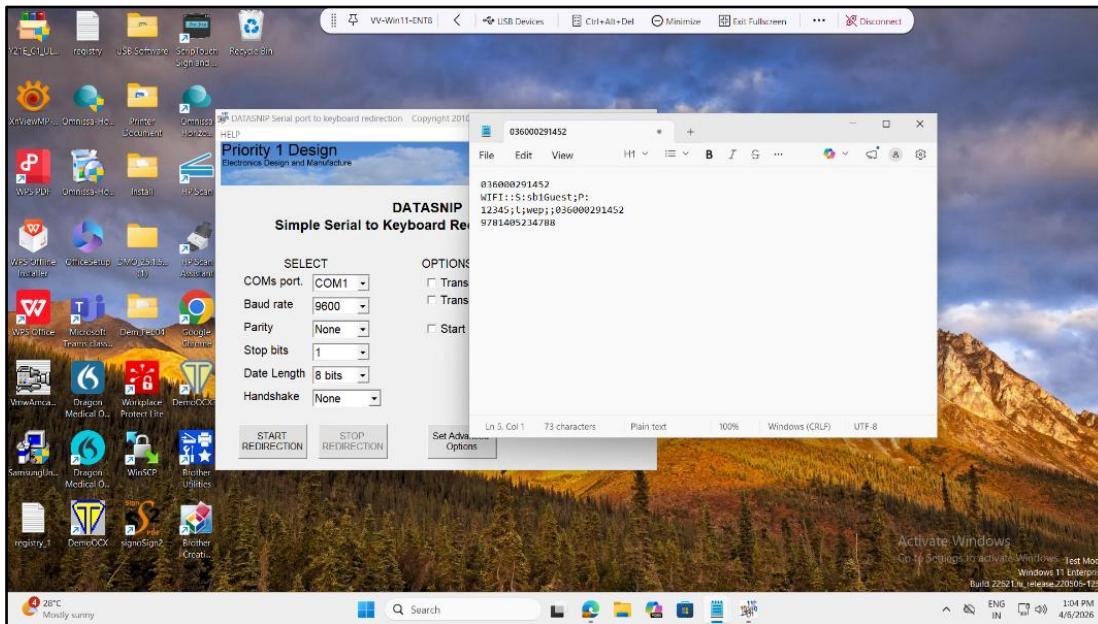


Step 14: Open “Data snip” application

Step 15: Select the COM Port value (i.e., The value shown in the Device Manager) and click Start Redirection button

Step 16: Open Notepad application

Step 17: Scan a bar code, the serial number will be appeared on Notepad application



Note:

1. Same steps to be followed for testing different models of Zebra Barcode Scanner LS2208, Zebra Barcode Scanner DS4608, Honeywell Barcode Scanner 1950, RETSOL LS450, Zebra DS8108

Configuring Teemi T26N-AU (USB Redirection):

First Level Validation

Step 0: Registry Settings not required, Testing Application – Notepad

Step 1: Connect the Teemi T26N-AU to the Endpoint

Step 2: Login Omnissa Horizon Client and open the preferred desktop session (VDI/RDSH)

Step 3: Make sure Teemi T26N-AU barcode scanner redirected to the USB redirection Menu

Driver Installation:

Step 4: Install the “Data snip” application in the VDI/RDSH desktop

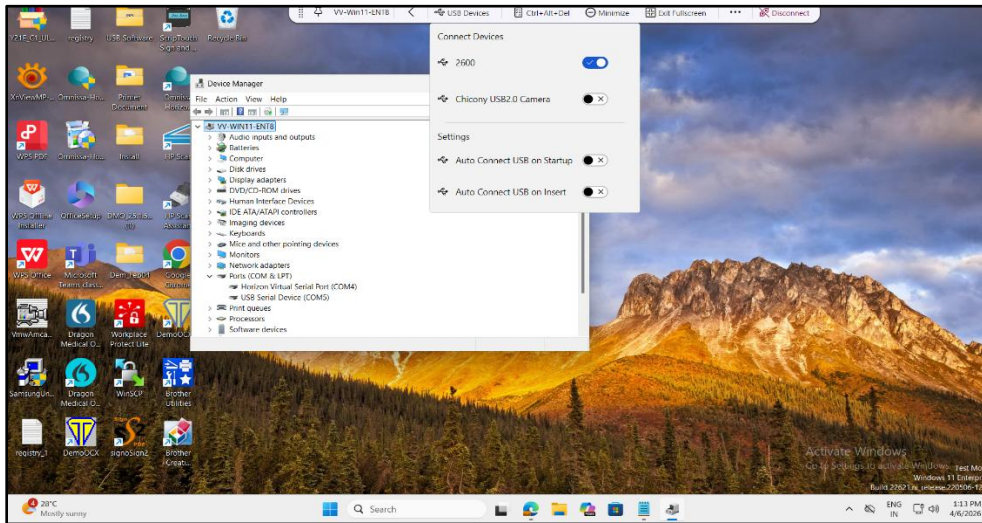
Omnissa LLC, 590 E Middlefield Road Mountain View CA 94043 www.omnissa.com

Copyright © 2026 Omnissa, LLC. All rights reserved. This product is protected by U.S. and international copyright and intellectual property laws. Omnissa products are covered by one or more patents listed at <https://www.omnissa.com>. Omnissa is a registered trademark or trademark of Omnissa, LLC in the United States and/or other jurisdictions. All other marks and names mentioned herein may be trademarks of their respective companies.

Testing Steps:

Step 5: Redirect the Teemi T26N-AU barcode Scanner device under USB redirection Menu

Step 6: Go to Device Manager and check the COM port value



Step 7: Open “data snip” application

Step 8: Select the COMs Port value (i.e., The value shown in the Device Manager) and click Start Redirection button.

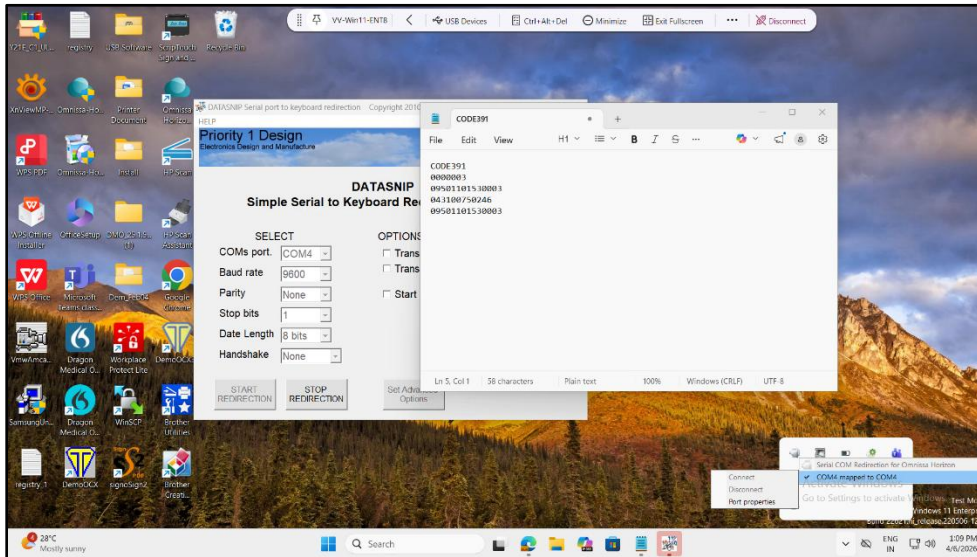
Step 9: Open Notepad application.

Step 10: Scan a bar code, the serial number will appear on Notepad application.

Step 11: This model works as both USB+ Serial Port.

Step 12: Redirect the barcode Scanner device under serial port redirection menu.

Step 13: Go to Device Manager and check the COM port value.

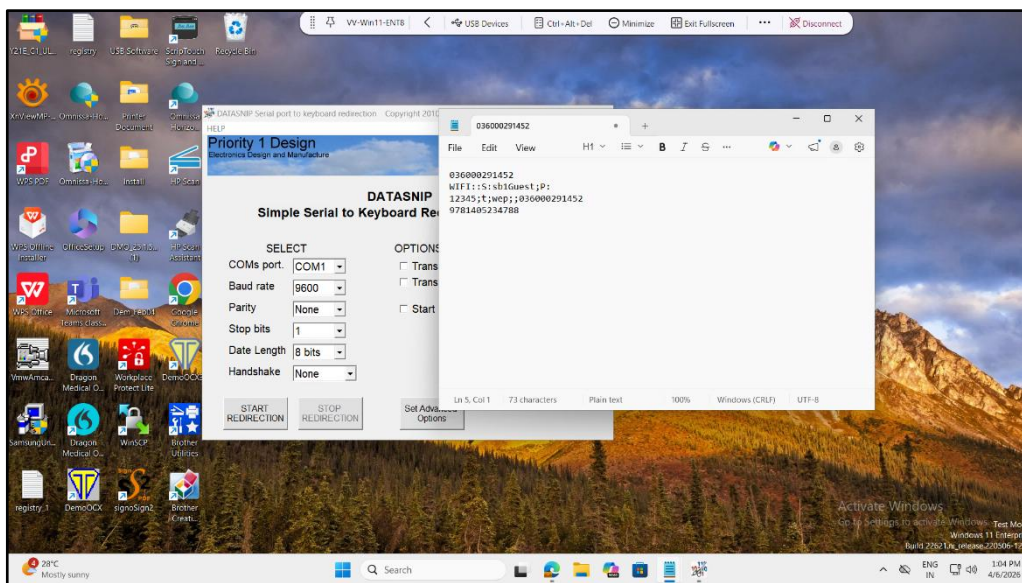


Step 14: Open “Data snip” application

Step 15: Select the COM Port value (i.e., The value shown in the Device Manager) and click Start Redirection button

Step 16: Open Notepad application

Step 17: Scan a barcode, the serial number will be appeared on Notepad application



Omnissa LLC, 590 E Middlefield Road Mountain View CA 94043 www.omnissa.com

Copyright © 2026 Omnissa, LLC. All rights reserved. This product is protected by U.S. and international copyright and intellectual property laws. Omnissa products are covered by one or more patents listed at <https://www.omnissa.com>. Omnissa is a registered trademark or trademark of Omnissa, LLC in the United States and/or other jurisdictions. All other marks and names mentioned herein may be trademarks of their respective companies.

Note:

1. Same steps to be followed for testing different model of Zebra Barcode Scanner
LS2208,Zebra Barcode Scanner DS4608, Honeywell Barcode Scanner
1950,RETSOL LS450,Zebra DS8108

Common Configuration Issue and Troubleshooting Steps

Issue 1: The Barcode reader details is garbled or doesn't seem to be right

- Try to scan the barcode properly
- Plug-out and Re-plug the device
- Make sure the barcode cable is not pulling out from the reader when the scan is performed
- Plug the device in different USB port and verify

Issue 2: Device name not appearing in the USB redirection menu:

- Plug-out and Re-plug the device
- For Linux endpoint need to start the USB Arbitrator and need to execute the following commands

```
Sudo /etc/init.d/horizon-USBArbitrator stop
Sudo /etc/init.d/horizon-USBArbitrator start
```

- For Mac endpoint Click--> **Start USB Redirection -->Unlock USB Redirection Option** inside the VM.
- VM disconnect/logoff and re-connect

Issue 3: Unable to redirect the device in the serial port redirection menu

- Verify the devices is not redirected in the USB redirection menu
- Verify whether device is not redirected in any other VDI/RDSH desktops within the same HZ environment
- VM disconnect/logoff and re-connect
- Relaunch HZ environment

Tested Barcode Scanners:

Device Name	Device Model
Motorola DS4208	Motorola
Retsol LS450	Retsol
Retsol PD3000	
Datalogic GBT4500	Datalogic
Zebra Barcode Scanner LS2208	Zebra
Zebra Barcode Scanner DS4608	
Zebra DS8108	
Zebra L14278	