

omnissa®

Omnissa Horizon  
Barcode Scanner Configuration Guide

## Contents

<b>Overview</b> .....	<b>4</b>
<b>Getting Device Vid and Pid:</b> .....	<b>4</b>
<b>Configuring Barcode Scanner (RMKS / USB / Serial Port Redirection):</b> .....	<b>Error! Bookmark not defined.</b>
<b>Configuring Motorola DS4208 using RMKS</b> .....	<b>6</b>
First Level Validation:.....	6
Testing Steps:.....	7
<b>Configuring RETSOL LS450 (USB Redirection):</b> .....	<b>7</b>
First Level Validation:.....	7
Driver Installation:.....	8
Testing Steps:.....	8
<b>Configuring RETSOL LS450 (Serial Port Redirection):</b> .....	<b>9</b>
<b>Configuring Teemi T26N-AU (USB Redirection):</b> .....	<b>11</b>
First Level Validation.....	11
Driver Installation:.....	11
Testing Steps:.....	11
<b>Configuring Teemi T26N-AU (USB Redirection):</b> .....	<b>Error! Bookmark not defined.</b>
<b>Common Configuration Issue and Troubleshooting Steps</b> .....	<b>13</b>
<b>Tested Barcode Scanners:</b> .....	<b>14</b>

**Legend:**

S.No	LEGEND	DESCRIPTION
1	HZE	Horizon Enterprise
2	HZCoA	Horizon Cloud on Azure
3	HCS V1	Horizon Cloud Services V1
4	HCS V2	Horizon Cloud Services V2
5	HCS NextGen	Horizon Cloud Services NextGen

**Tested Horizon Versions:**

HZE	HZCoA	HCS V1	HCS V2	HCS NextGen
7.8 ~ 7.13	7.8 ~ 8.5	8.7	8.8 ~ 8.13	8.14
8.0 ~ 8.17				

**Device Supported Horizon Versions:**

Device Name	Tested HZ Versions
Motorola DS4208	7.8 ~ 8.17
Datalogic GBT4500	7.8 ~ 8.17
Zebra-LS2208	8.4 ~ 8.17
RETSOL LS450	8.12 ~ 8.17
Zebra-DS4608	8.12 ~ 8.17
Honeywell Barcode Scanner 1950	8.4 ~ 8.17
Zebra-DS8108	8.12 ~ 8.17
Zebra-L14278	8.12 ~ 8.17
Honeywell Barcode Scanner 1900G	8.12 ~ 8.17
Teemi T26N-AU	8.12 ~ 8.17
Retsol PD3000	8.17

## Overview

This document provides deeper insights on the setup and configuration for Barcode Scanners using USB, RMKS and Serial Port Redirection.

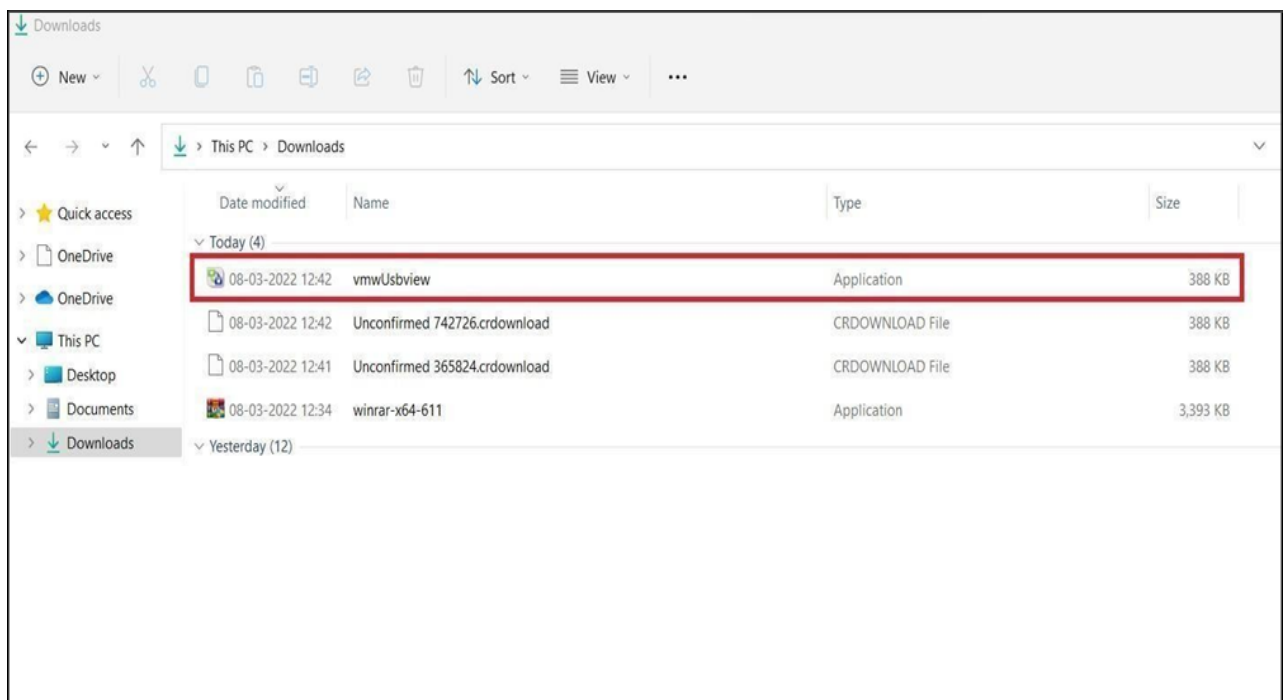
## Getting Device Vid and Pid:

**Step 1:** This value is required to apply the registry settings for few devices to make them work properly

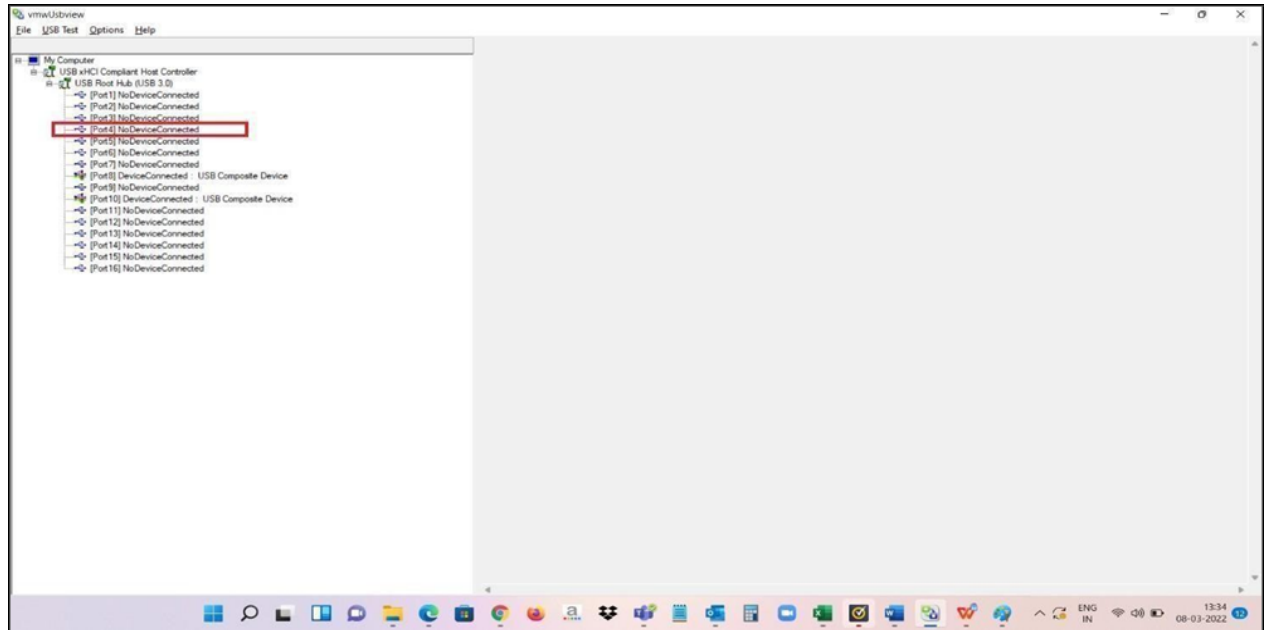
**Step 2:** Extract below file and Open the application “vmwUsbview”



VMwUSBView.zip

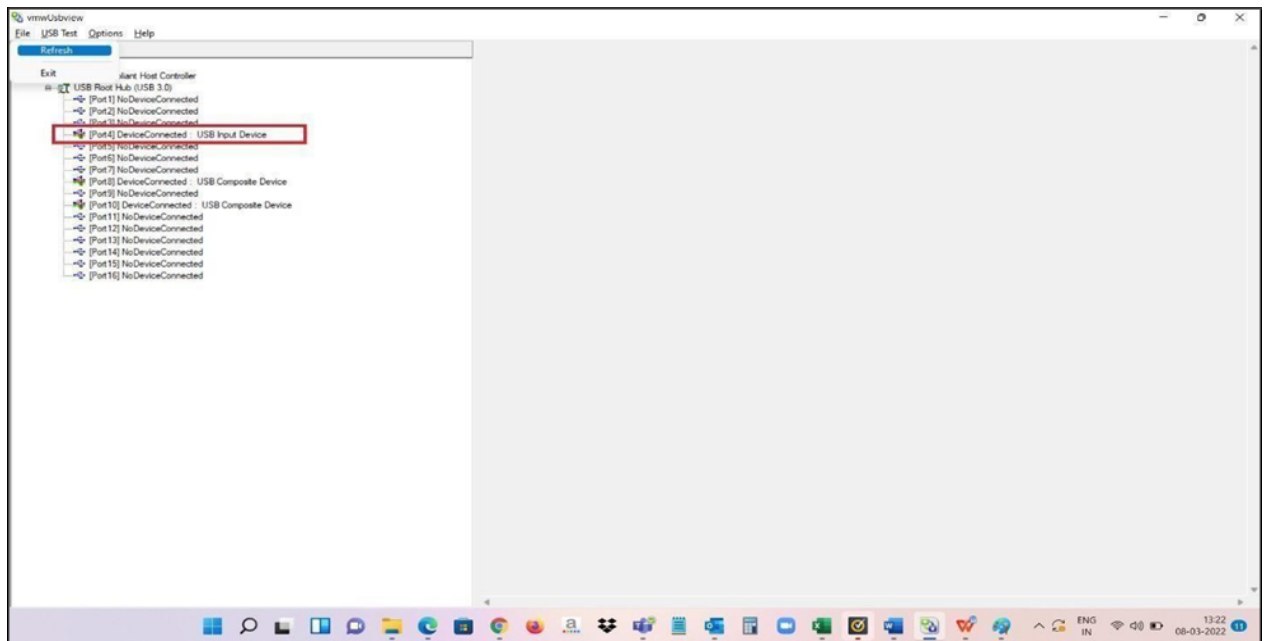


**Step 3:** Connect the USB device for which the Vid Pid value is required



**Step 4:** Navigate to File → Refresh

**Step 5:** The vmwUsbview screen will get updated

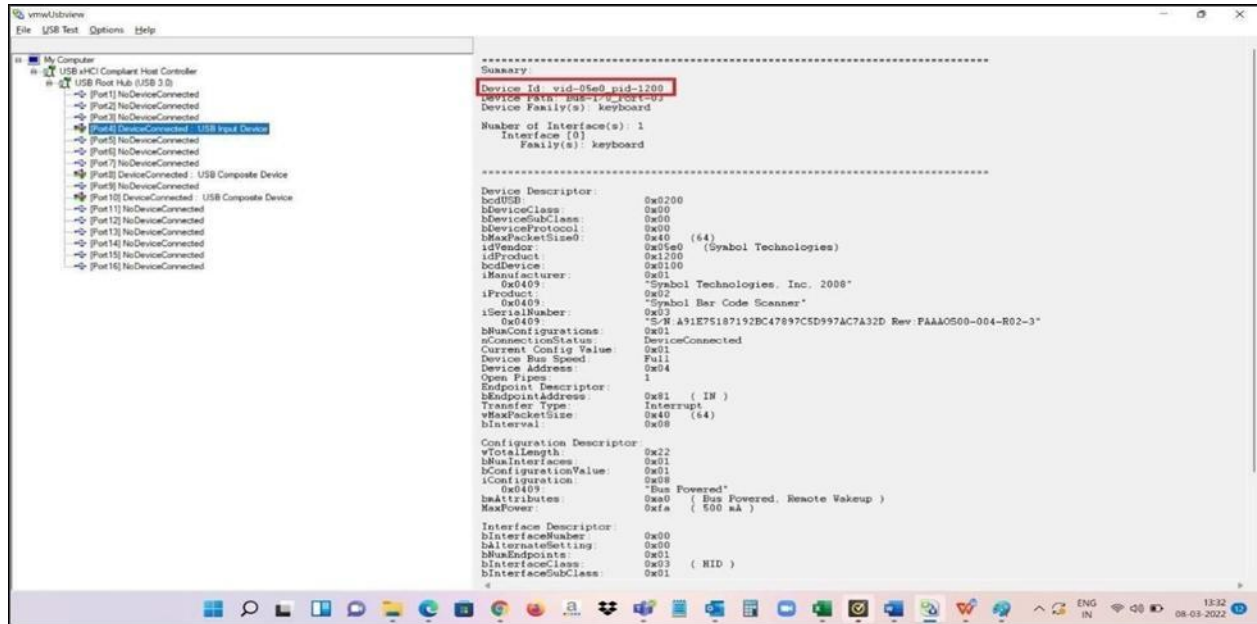


**Step 6:** Click on the port where the USB device is connected

**Step 7:** Vid Pid value will be appeared on the right side of the application

Omnissa LLC, 590 E Middlefield Road Mountain View CA 94043 [www.omnissa.com](http://www.omnissa.com)

Copyright © 2025 Omnissa, LLC. All rights reserved. This product is protected by U.S. and international copyright and intellectual property laws. Omnissa products are covered by one or more patents listed at <https://www.omnissa.com>. Omnissa is a registered trademark or trademark of Omnissa, LLC in the United States and/or other jurisdictions. All other marks and names mentioned herein may be trademarks of their respective companies.



## Configuring Motorola DS4208 using RMKS

### First Level Validation:

**Step 0:** Registry Settings not required, Testing Application – Notepad

**Step 1:** Connect the Motorola DS4208 to the endpoint

**Step 2:** Login Omnissa Horizon Client and open the preferred desktop session (VDI/RDSH)



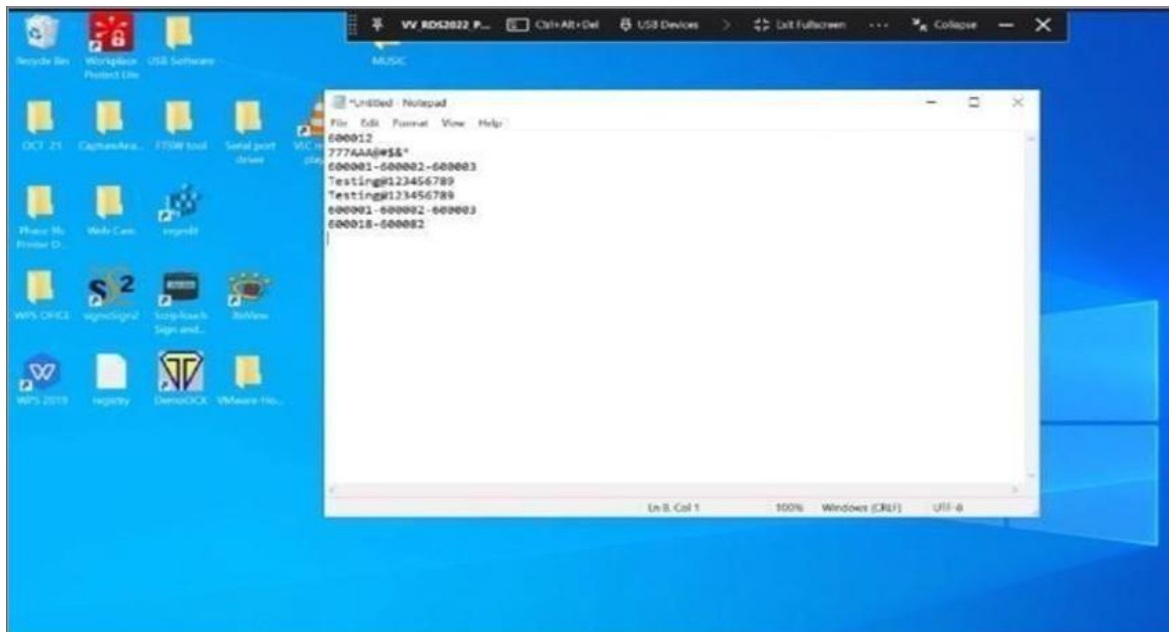
Omnissa LLC, 590 E Middlefield Road Mountain View CA 94043 [www.omnissa.com](http://www.omnissa.com)

Copyright © 2025 Omnissa, LLC. All rights reserved. This product is protected by U.S. and international copyright and intellectual property laws. Omnissa products are covered by one or more patents listed at <https://www.omnissa.com>. Omnissa is a registered trademark or trademark of Omnissa, LLC in the United States and/or other jurisdictions. All other marks and names mentioned herein may be trademarks of their respective companies.

## Testing Steps:

**Step 3:** Open Notepad application

**Step 4:** Scan a bar code, the serial number will be appeared on Notepad application



## Note:

1: Same steps to be followed for testing different model of DataLogic GBT4500, Zebra L14278, MotorolaDS4208

## Configuring RETSOL LS450 (USB Redirection):

### First Level Validation:

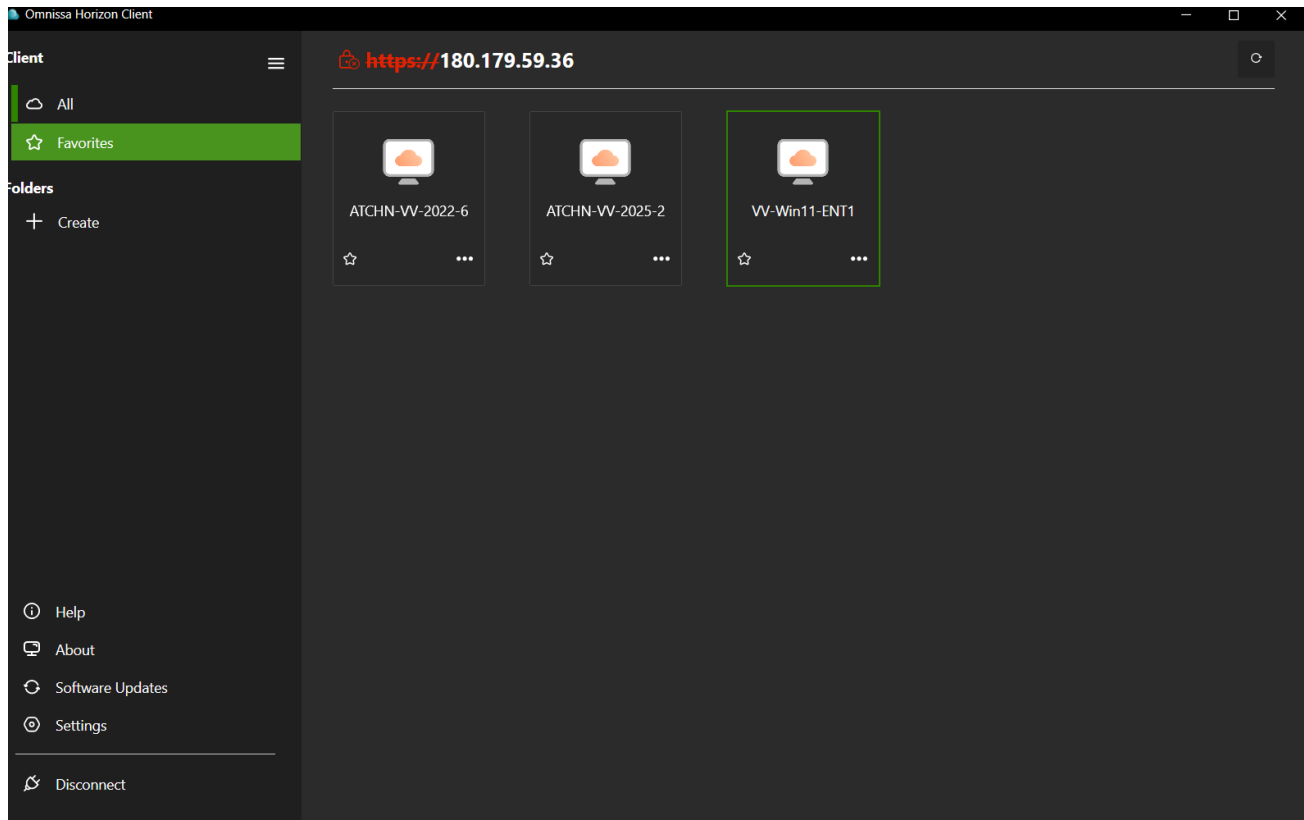
**Step 0:** Registry Settings not required, Testing Application – Notepad

**Step 1:** Connect the RETSOL LS450 to the Endpoint

**Step 2:** Login Ommissa Horizon Client and open the preferred desktop session (VDI/RDSH)

Ommissa LLC, 590 E Middlefield Road Mountain View CA 94043 [www.ommissa.com](http://www.ommissa.com)

Copyright © 2025 Ommissa, LLC. All rights reserved. This product is protected by U.S. and international copyright and intellectual property laws. Ommissa products are covered by one or more patents listed at <https://www.ommissa.com>. Ommissa is a registered trademark or trademark of Ommissa, LLC in the United States and/or other jurisdictions. All other marks and names mentioned herein may be trademarks of their respective companies.



**Step 3:** Make sure RETSOL LS450 barcode scanner is redirected to the USB redirection Menu

### Driver Installation:

**Step 4:** Install the “Data snip” application in the VDI/RDSH desktop.

### Testing Steps:

**Step 5:** Redirect the RETSOL LS450 barcode Scanner device under USB redirection Menu

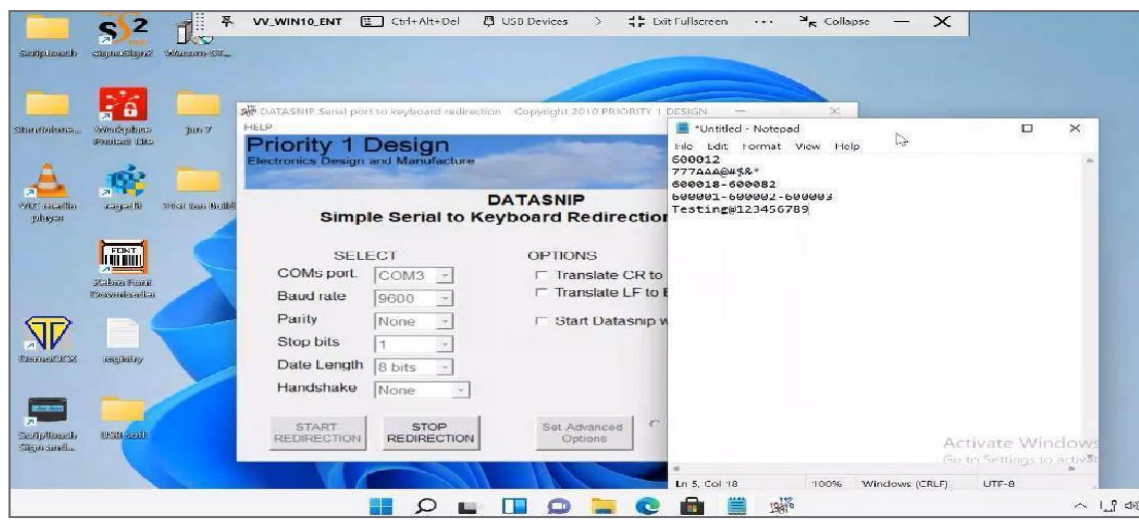
**Step 6:** Go to Device Manager and check the COM port value

**Step 7:** Open “Data snip” application

**Step 8:** Select the COMs Port value (i.e., The value shown in the Device Manager) and click Start Redirection button

**Step 9:** Open Notepad application

**Step 10:** Scan a bar code, the serial number will be appeared on Notepad application

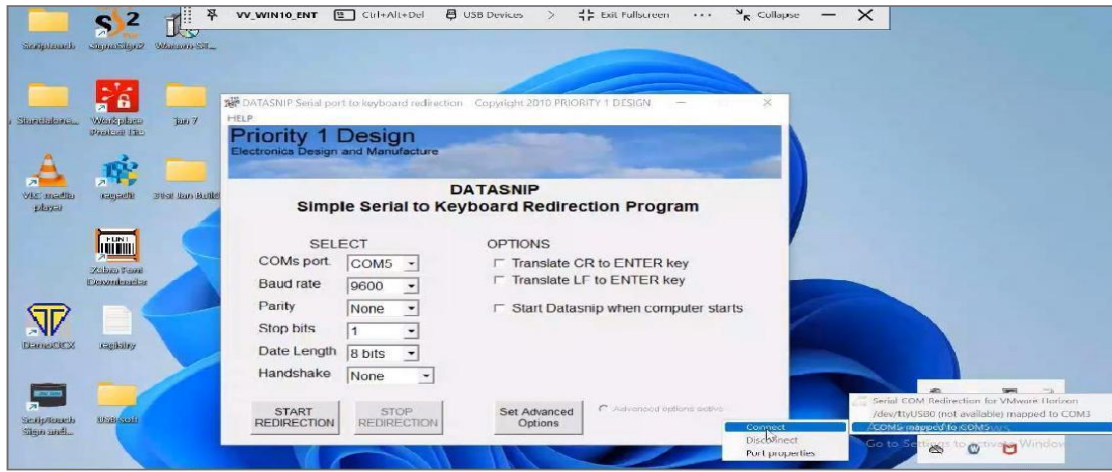


## Configuring RETSOL LS450 (Serial Port Redirection):

**Step 11:** This model works as both USB+ Serial Port

**Step 12:** Redirect the barcode Scanner device under serial port redirection menu

**Step 13:** Go to Device Manager and check the COM port value

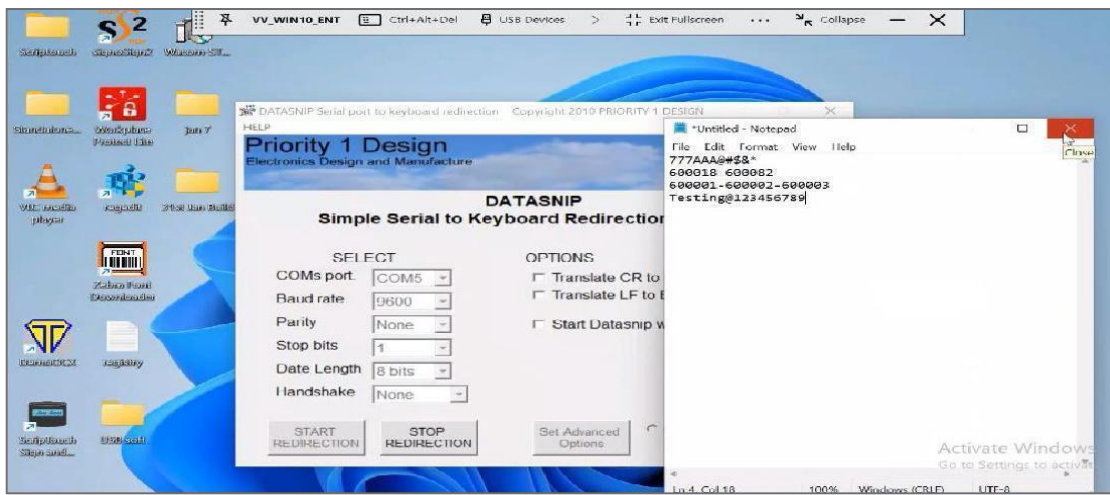


**Step 14:** Open “Data snip” application

**Step 15:** Select the COM Port value (i.e., The value shown in the Device Manager) and click Start Redirection button

**Step 16:** Open Notepad application

**Step 17:** Scan a bar code, the serial number will be appeared on Notepad application



**Note:**

1. Same steps to be followed for testing different model of Zebra Barcode Scanner LS2208,Zebra Barcode Scanner DS4608, Honeywell Barcode Scanner 1950,RETSOL LS450,Zebra DS8108

**Configuring Teemi T26N-AU (USB Redirection):****First Level Validation**

**Step 0:** Registry Settings not required, Testing Application – Notepad

**Step 1:** Connect the Teemi T26N-AU to the Endpoint

**Step 2:** Login Omnissa Horizon Client and open the preferred desktop session (VDI/RDSH)

**Step 3:** Make sure Teemi T26N-AU barcode scanner redirected to the USB redirection Menu

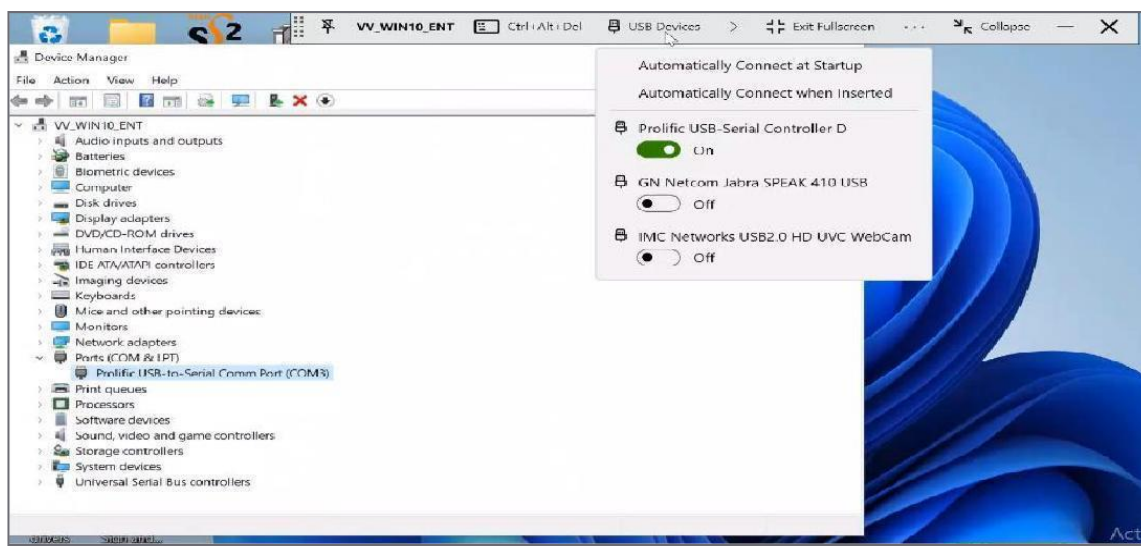
**Driver Installation:**

**Step 4:** Install the “Data snip” application in the VDI/RDSH desktop

**Testing Steps:**

**Step 5:** Redirect the Teemi T26N-AU barcode Scanner device under USB redirection Menu

**Step 6:** Go to Device Manager and check the COM port value



Omnissa LLC, 590 E Middlefield Road Mountain View CA 94043 [www.omnissa.com](http://www.omnissa.com)

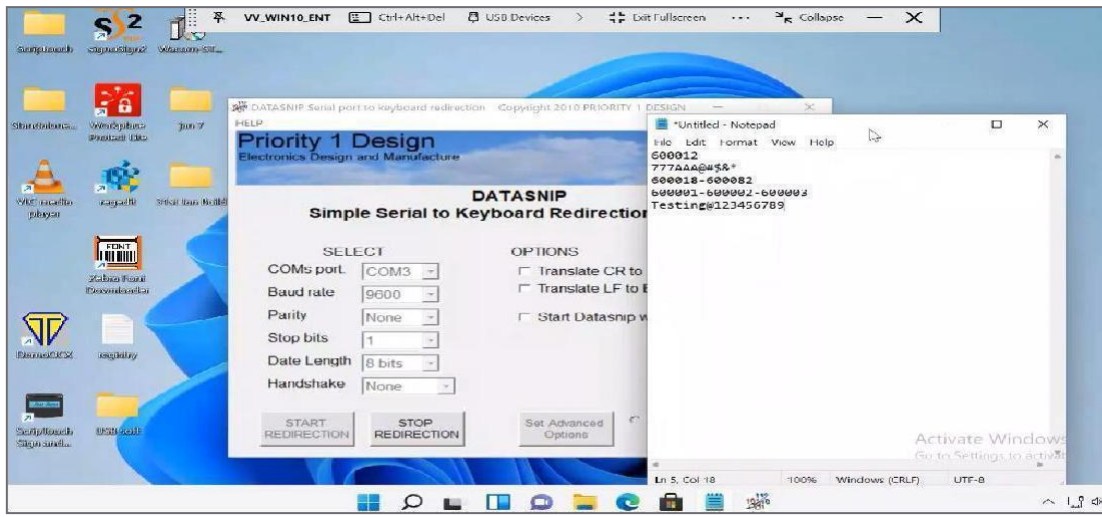
Copyright © 2025 Omnissa, LLC. All rights reserved. This product is protected by U.S. and international copyright and intellectual property laws. Omnissa products are covered by one or more patents listed at <https://www.omnissa.com>. Omnissa is a registered trademark or trademark of Omnissa, LLC in the United States and/or other jurisdictions. All other marks and names mentioned herein may be trademarks of their respective companies.

**Step 7:** Open “data snip” application

**Step 8:** Select the COMs Port value (i.e., The value shown in the Device Manager) and click Start Redirection button

**Step 9:** Open Notepad application

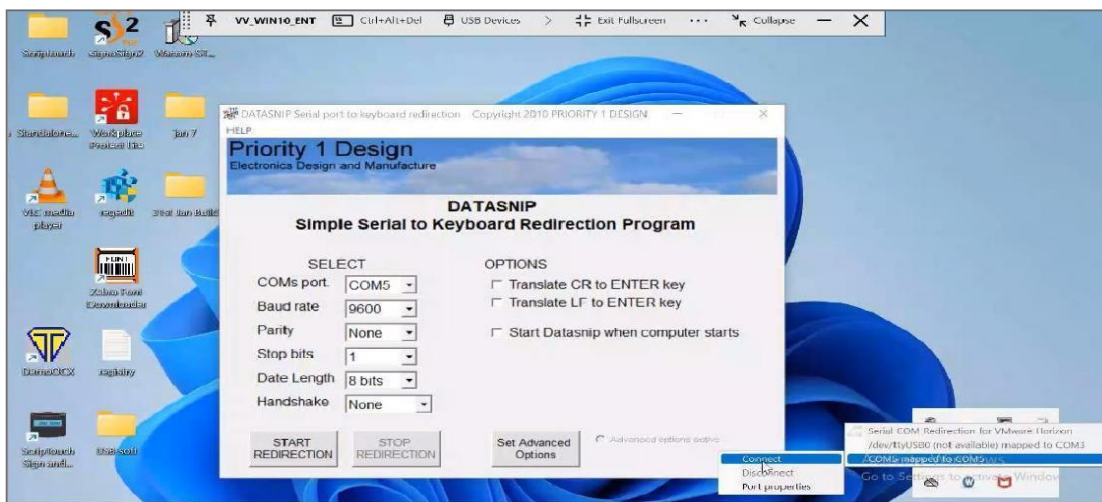
**Step 10:** Scan a bar code, the serial number will be appeared on Notepad application



**Step 11:** This model works as both USB+ Serial Port

**Step 12:** Redirect the barcode Scanner device under serial port redirection menu

**Step 13:** Go to Device Manager and check the COM port value



**Step 14:** Open “Data snip” application

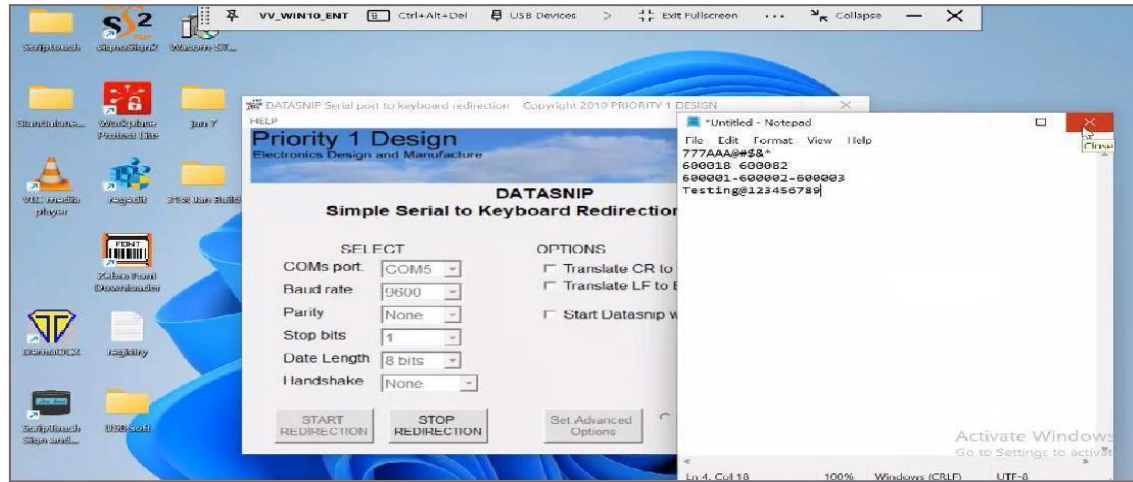
**Step 15:** Select the COM Port value (i.e., The value shown in the Device Manager) and click Start Redirection button

Omnissa LLC, 590 E Middlefield Road Mountain View CA 94043 [www.omnissa.com](http://www.omnissa.com)

Copyright © 2025 Omnissa, LLC. All rights reserved. This product is protected by U.S. and international copyright and intellectual property laws. Omnissa products are covered by one or more patents listed at <https://www.omnissa.com>. Omnissa is a registered trademark or trademark of Omnissa, LLC in the United States and/or other jurisdictions. All other marks and names mentioned herein may be trademarks of their respective companies.

**Step 16:** Open Notepad application

**Step 17:** Scan a barcode, the serial number will be appeared on Notepad application



Note:

1. Same steps to be followed for testing different model of Zebra Barcode Scanner LS2208, Zebra Barcode Scanner DS4608, Honeywell Barcode Scanner 1950, RETSOL LS450, Zebra DS8108

## Common Configuration Issue and Troubleshooting Steps

**Issue 1:** The Barcode reader details is garbled or doesn't seem to be right

- Try to scan the barcode properly
- Plug-out and Re-plug the device
- Make sure the barcode cable is not pulling out from the reader when the scan is performed
- Plug the device in different USB port and verify

**Issue 2:** Device name not appearing in the USB redirection menu:

- Plug-out and Re-plug the device
- For Linux endpoint need to start the USB Arbitrator and need to execute the following commands  
Sudo /etc/init.d/horizon-USBArbitrator stop  
Sudo /etc/init.d/horizon-USBArbitrator start
- For Mac endpoint Click--> **Start USB Redirection** --> **Unlock USB Redirection** Option inside the VM.
- VM disconnect/logoff and re-connect

Omnissa LLC, 590 E Middlefield Road Mountain View CA 94043 [www.omnissa.com](http://www.omnissa.com)

Copyright © 2025 Omnissa, LLC. All rights reserved. This product is protected by U.S. and international copyright and intellectual property laws. Omnissa products are covered by one or more patents listed at <https://www.omnissa.com>. Omnissa is a registered trademark or trademark of Omnissa, LLC in the United States and/or other jurisdictions. All other marks and names mentioned herein may be trademarks of their respective companies.

**Issue 3:** Unable to redirect the device in the serial port redirection menu

- Verify the devices is not redirected in the USB redirection menu
- Verify whether device is not redirected in any another VDI/RDSH desktops within the same HZ environment
- VM disconnect/logoff and re-connect
- Relaunch HZ environment

**Tested Barcode Scanners:**

Device Name	Device Model
Motorola DS4208	Motorola
Retsol LS450	Retsol
Retsol PD3000	
Datalogic GBT4500	Datalogic
Zebra Barcode Scanner LS2208	Zebra
Zebra Barcode Scanner DS4608	
Zebra DS8108	
Zebra L14278	